

SCHIEFFLERA

reiniana D.G. Frodin in *Proc. Acad. Nat. Sci. Philadelphia*, 140(2): 337 (1988), nom. nov.: *S. aromatica* f. *scandens* Hochreutiner.
revolutissima M.G. Baumann-Bodenheim, *Syst. Fl. Neu-Caledonien*, 5: 77, 67 (1989), without latin descr. or type—New Caledonia.

argusii Frodin ex M.J. & J.F.M. Cannon in *Br. Mus. (Nat. Hist.), Bot.*, 19: 61 (1989),
no D. G. Frodin in *Proc. Acad. Nat. Sci. Philadelphia*, 141: 318 (1989), nom. nov.
Didymopanax *hieri* *Can* in *Br. Mus. (Nat. Hist.), Bot.*, 19: 38 (1989)—Panama.

simplex J.A. Steyermark & Holst in *Ann. Missouri Bot. Gard.*, 75(3): 1082 (1988)—Venezuela.

urbaniana (Marchal) D.G. Frodin in *Proc. Acad. Nat. Sci. Philadelphia*, 141: 318 (1989): *Didymopanax urbanianus*.

vanuatu P.P. Lowry in *Bull. Mus. Nat. Hist. Nat., B. Adansonia*, Ser. 4, 11(2): 129 (1989)—Vanuatu.

veitchii (Carnière) D.G. Frodin & P.P. Lowry in *Baileya*, 23(1): 11 (1989).

whitefordiae M.J. & J.F.M. Cannon in *Bull. Bot. Mus. (Nat. Hist.), Bot.*, 19: 37 (1989)—Panama.

yutajensis J.A. Steyermark & Holst in *Ann. Missouri Bot. Gard.*, 75(3): 1082 (1988)—Venezuela.

SCHIEDEA (Caryophyllac.).

kauaiensis H. St. John in *Phytologia*, 64(3): 177 (1988)—Hawaiian Is.

obatae H. St. John in *Phytologia*, 64(3): 178 (1988)—Hawaiian Is.

wichmanii H. St. John in *Phytologia*, 64(3): 178 (1988)—Hawaiian Is.

SCHIEDEELLA (Orchidac.).

chartacea (L.O. Wms.) P. Burns-Balogh in *Orquidea (México)*, 10(1): 92 (1986): *Spiranthes chartacea*.

dendroneura (Sheviak & Bye) P. Burns-Balogh in *Orquidea (México)*, 10(1): 92 (1986): *Spiranthes dendroneura*.

diaphana (Lindl.) P. Burns-Balogh & Greenwood in *Orquidea (México)*, 10(1): 93 (1986): *Spiranthes diaphana*.

dodii P. Burns-Balogh in *Orchidee*, 40(5): 169 (1989)—Hispaniola (Dominican Republic).

durangensis (A. & S.) P. Burns-Balogh in *Orquidea (México)*, 10(1): 93 (1986): *Spiranthes durangensis*.

faucci-sanguinea (Dod) P. Burns-Balogh in *Orchidee*,

fernandezii J. Cuatrecasas in *Phytologia*, 68(4): 261 (1990)—Venezuela.

sylvaticum D. Sabatier in *Proc. Kon. Nederl. Akad. Wetensch., C*, 90(2): 206 (1987)—French Guiana.

SCHIZACHYRIUM (Gramin.).

beckii T.J. Killeen in *Ann. Missouri Bot. Gard.*, 77(1): 184 (1990)—Bolivia.

calvescens (Fern.) C.F. Reed in *Phytologia*, 67(6): 451 (1989): *Andropogon praematurus* f. *hirtivaginatus*.

scoparium f. *calvescens* (Fern.) C.F. Reed in *Phytologia*, 67(6): 451 (1989): *Andropogon scoparius* f. *calvescens*.

var. polycladum (Scribn. & Ball) C.F. Reed in *Phytologia*, 63(5): 410 (1987): *Andropogon scoparius* var. *polycladus*.

fillosissimus (Kearney) C.F. Reed in *Phytologia*, 67(6): 451 (1989): *Andropogon scoparius* f. *fillosissimus*.

williamsonii (Vahl) J. Cuatrecasas in *Phytologia*, 67(6): 451 (1989): *Andropogon scoparius* f. *williamsonii*.

amarulum (Vahl) J. Cuatrecasas in *Phytologia*, 67(6): 451 (1989): *Andropogon scoparius* f. *amarulum*.

amarulum (Vahl) J. Cuatrecasas in *Phytologia*, 67(6): 451 (1989): *Andropogon scoparius* f. *amarulum*.

amarulum (Vahl) J. Cuatrecasas in *Phytologia*, 67(6): 451 (1989): *Andropogon scoparius* f. *amarulum*.

amarulum (Vahl) J. Cuatrecasas in *Phytologia*, 67(6): 451 (1989): *Andropogon scoparius* f. *amarulum*.

SCHIZOGLOSSUM (Cyperac.).

amatolicum O.M. Hilliard in *Notes Roy. Bot. Gard. Edinburgh*, 45(2): 182 (1988 publ. 1989)—South Africa (Cape Province).

rubiginosum O.M. Hilliard in *Notes Roy. Bot. Gard. Edinburgh*, 45(2): 182 (1988 publ. 1989)—South Africa (Natal).

SCHIZOPETALON (Crucif.).

arcuatum I.A. Al-Shehbaz in *Harvard Pap. Bot.*, 1: 34 (1989)—Chile.

brachycarpum I.A. Al-Shehbaz in *Harvard Pap. Bot.*, 1: 38 (1989)—Chile.

corymbosum I.A. Al-Shehbaz in *Harvard Pap. Bot.*, 1: 41 (1989)—Chile.

maipoanum P. Ravenna in *Onira, Bot. Leafsl.*, 1(4): 32 (1988), as 'Schyzopetalon'—Chile.

SCHIZOPHRAGMA (Hydrangeac.).

hydrangeoides f. *mollis* (Honda) Hara ex H. Ohba in *J. Jap. Bot.*, 64(11): 325 (1989): *S. hydrangeoides* var. *mollis*.

lauricola McVaugh ex D. Frame in *Novo-Galiciana*, 15: 267 (1989)—Mexico.

pellucidum D. Frame in *R. McV. Galiciana*, 15: 272 (1989)—Mexico.

tigrense D. Frame in *R. McV. Galiciana*, 15: 274 (1989)—Mexico.

SCHOENOCEPHALIUM (Rapateac.).

maipoanum B. Cuatrecasas in *Phytologia*, 67(6): 451 (1989)—Venezuela.

SCHOENIDIUM (O. S. Berg).

oligocephalus (W.M. Curtis) O. Seber in *PERA*, 16(1): 182 (1986): *Oreobolus oligocephalus*.

SCHOENOPLECTUS (Cyperac.).

xkueckenthalianus (Junge) D.H. Keiser in *Occas. Pap.*, 29: 128 (1989): *Scirpus xkueckenthalianus*.

lacustris subsp. *validus* (Vahl) T. Koyama in *Occas. Pap.*, 29: 128 (1989): *Scirpus lacustris* subsp. *validus*.

SCHODENORCHIS (Orchidac.).

schardtii (Finet) L.V. Averyanov in *Occas. Pap.*, 29: 107 (1988): *Saccolabium schardtii*.

schardtii (Finet) L.V. Averyanov in *Occas. Pap.*, 29: 107 (1988): *Saccolabium schardtii*.

SCHOENOXIPHIMUM (Cyperac.).

altum I. Kukkonen in *Notes Roy. Bot. Gard. Edinburgh*, 43(3): 365 (1986)—South Africa (Cape Province).

bracteosum I. Kukkonen in *Notes Roy. Bot. Gard. Edinburgh*, 43(3): 365 (1986)—South Africa (Cape Province), Lesotho.

burttii I. Kukkonen in *Notes Roy. Bot. Gard. Edinburgh*, 43(3): 365 (1986)—South Africa (Natal).

molle I. Kukkonen in *Notes Roy. Bot. Gard. Edinburgh*, 43(3): 366 (1986)—South Africa (Natal).

strictum I. Kukkonen in *Notes Roy. Bot. Gard. Edinburgh*, 43(3): 366 (1986)—South Africa (Natal).

SCHOEFFIA (Olacac.).

clarkii J.A. Steyermark in *Ann. Missouri Bot. Gard.*, 75(3): 1061 (1988)—Venezuela.

paradoxa (Bisse & Berazain) R. Berazain

Nomenclatura biológica

	Botânica	Zoologia
<i>Cannabis</i>	maconha	ave
<i>Cecropia</i>	embaúba	mariposa
<i>Cereus</i>	cacto	anêmona
<i>Colocasia</i>	inhame	mariposa
<i>Dracaena</i>	dracena	lagarto
<i>Dracunculus</i>	arácea	Nematoda
<i>Ficus</i>	figo	molusco
<i>Iris</i>	iris	louva-deus
<i>Morus</i>	amora	mergulhão
<i>Trichopus</i>	inhame	peixe
<i>Leiosthix</i>	sempre-viva	rouxinol

	Botânica	Zoologia
Ordem	-ales	
Família	-aceae	idae



UNIVERSIDADE DE SÃO PAULO



	Botânica	Zoologia
autor	sim	opcional
data	não	, opcional
adjetivos e genitivos	sim	sim
tautonímia	proibido	permitido
categorias infra-específicas	subespécie variedade forma subforma	subespécie
combinações (transferências)	(autor) autor	(autor, data opcional)



Descrição,

Tipos

e

nomes

SCHIEFLERA :-
reiniana D.G. Frodin in Proc. Acad. Nat. Sci. Philadelphia, 140(2): 337 (1988), nom. nov.: S. aromatica f. scandens Hochreutiner.
revolutissima M.G. Barrington in Denzheim, Syst. Fl. Neu-Caledonien, 5: 67 (1979), without latin descr. or type—New Caledonia.
rodriguesiana Frodin et al. in J. & J.F.M. Cannon in Bull. Brit. Mus. (Nat. Hist.), Bot., 19: 38 (1989), nom. nov.: Didymopanax pittieri Marchal.
rodriguesiana D.G. Frodin in Proc. Acad. Nat. Sci. Philadelphia, 141: 317 (1989), nom. nov.: Didymopanax pittieri Marchal.
sapoensis M.J. & J.F.M. Cannon in Bull. Brit. Mus. (Nat. Hist.), Bot., 19: 38 (1989)—Panama.
simplex J.A. Steyermark & Holst in Ann. Missouri Bot. Gard., 75(3): 1082 (1988)—Venezuela.
urbaniana (Marchal) D.G. Frodin in Proc. Acad. Nat. Sci. Philadelphia, 141: 318 (1989): Didymopanax urbanianus.
vanuatu P.P. Lowry in Bull. Mus. Nation. Hist. Nat. B. Adansonia, Ser. 4, 11(2): 129 (1989)—Vanuatu.
veitchii (Carnière) D.G. Frodin & P.P. Lowry in Baileya, 23(1): 11 (1989): Aralia veitchii.
whitefoordiae M.J. & J.F.M. Cannon in Bull. Brit. Mus. (Nat. Hist.), Bot., 19: 47 (1989)—Panama.
yutajensis J.A. Steyermark & Holst in Ann. Missouri Bot. Gard., 75(3): 1082 (1988)—Venezuela.

SCHIEDEA (Caryophyllac.).
kauaiensis H. St. John in Phytologia, 64(3): 177 (1988)—Hawaiian Is.
obatae H. St. John in Phytologia, 64(3): 178 (1988)—Hawaiian Is.
wichmanii H. St. John in Phytologia, 64(3): 178 (1988)—Hawaiian Is.

SCHIEDEELLA (Orchidac.).
chartacea (L.O. Wms.) P. Burns-Balogh in Orquidea (México), 10(1): 92 (1986): Spiranthes chartacea.
dendroneura (Sheviak & Bye) P. Burns-Balogh in Orquidea (México), 10(1): 92 (1986): Spiranthes dendroneura.
diaphana (Lindl.) P. Burns-Balogh & Greenwood in Orquidea (México), 10(1): 93 (1986): Spiranthes diaphana.
dodii P. Burns-Balogh in Orchidee, 5(5): 109 (1989)—Hispaniola (Dominican Republic).
durangensis (A. & S.) P. Burns-Balogh in Orquidea (México), 10(1): 93 (1986): Spiranthes durangensis.
fauci-sanguinea (Dod) P. Burns-Balogh in Orchidee,

fernandezii J. Cuatrecasas in Phytologia, 68(4): 261 (1990)—Venezuela.
sylvaticum D. Sabatier in Proc. Kon. Nederl. Akad. Wetensch., C, 90(2): 15 (1987)—French Guiana.
PHILOPHILA (Commin.).
berlandieri T.J. Kuhn in An. Mus. N. J. Bot. Gard., 77(1): 1 (1990)—Bolivia.
hillebrandii (C. Sim.) in Austrobaileya, 1(1): 1 (1987)—Australia (Victoria).
praematurum (Fern.) C.F. Reed in Phytologia, 67(6): 451 (1989): Andropogon praematurus.
f. hirtivaginum (Fern.) C.F. Reed in Phytologia, 67(6): 451 (1989): Andropogon praematurus f. hirtivaginum.
scoparium
calvescens (Fern.) C.F. Reed in Phytologia, 67(6): 451 (1989): Andropogon scoparium f. calvescens.
f. hirtivaginum (Fern.) C.F. Reed in Phytologia, 67(6): 451 (1989): Andropogon scoparium f. hirtivaginum.
villosum (Vahl) J.F. Veldkamp in Blumea, 31(2): 306 (1986): Rottboellia villosa.

SCHIZOGLOSSUM (Asclepiadac.).
amatolicum O.M. Hilliard in Notes Roy. Bot. Gard. Edinburgh, 45(2): 182 (1988 publ. 1989)—South Africa (Cape Province).
rubiginosum Hilliard in Notes Roy. Bot. Gard. Edinburgh, 45(2): 182 (1988 publ. 1989)—South Africa (Cape Province).

SCHIZOPELON (Crucif.).
arcuatum I.A. Al-Shehbaz in Harvard Pap. Bot., 1: 34 (1989)—Chile.
brachycarpum I.A. Al-Shehbaz in Harvard Pap. Bot., 1: 38 (1989)—Chile.
corymbosum I.A. Al-Shehbaz in Harvard Pap. Bot., 1: 41 (1989)—Chile.
maipoanum P. Ravenna in Onira, Bot. Leafsl., 1(4): 32 (1988), as 'Schyzopetalon'—Chile.

SCHIZOPETALON (Crucif.).
hydropetalum (C. Sim.) in Austrobaileya, 1(1): 1 (1987)—Australia (Victoria).
hillebrandii (C. Sim.) in Austrobaileya, 1(1): 1 (1987)—Australia (Victoria).
maipoanum P. Ravenna in Onira, Bot. Leafsl., 1(4): 32 (1988), as 'Schyzopetalon'—Chile.

SCHIZOPETALON :-
lauricola McVaugh ex D. Frame in Novo-Galiciana, 15: 267 (1989)—Mexico.
pellucidum D. Frame in R. McVaugh in Novo-Galiciana, 15: 272 (1989)—Mexico.
tigrense D. Frame in R. McVaugh in Novo-Galiciana, 15: 274 (1989)—Mexico.

SCHIZOENOCEPHALIUM (Rapateac.).
apocynum B. Maguire in Acta Bot. Neerlandica, 17: 184 (1954)—Venezuela.

SCHIZOENOIDES O. Seberg in Wildderflora, 181 (1986). CYPERACEAE.
oligocephalus (W.M. Curtis) O. Seberg in Wildderflora, 16(1): 182 (1986): Oreobolus oligocephalus.

SCHOENOPLECTUS (Cyperac.).
×kueckenthalianus (Junge) D.H. Keiser in Phytologia, 18(2): 213 (1990): Scirpus × kueckenthalianus.
lacustris
subsp. validus (Vahl) T. Koyama in Occas. Pap., 29: 128 (1989): Scirpus lacustris subsp. validus.

SCHOENORCHIS (Orchidac.).
eberhardtii (Finet) L.V. Averyanov in Phytologia, 73(1): 107 (1988): Saccolabium eberhardtii.
endertii (J.J. Smith) E.A. Christenson in Lindleyana, 5(2): 101 (1990): Rottboellia endertii.

SCHOENOXIPHIMUM (Cyperac.).
altum I. Kukkonen in Notes Roy. Bot. Gard. Edinburgh, 43(3): 365 (1986)—South Africa (Cape Province).
bracteosum I. Kukkonen in Notes Roy. Bot. Gard. Edinburgh, 43(3): 365 (1986)—South Africa (Cape Province), Natal, Lesotho.
burtii I. Kukkonen in Notes Roy. Bot. Gard. Edinburgh, 43(3): 365 (1986)—Natal.
molle I. Kukkonen in Notes Roy. Bot. Gard. Edinburgh, 43(3): 366 (1986)—Natal.
strictum I. Kukkonen in Notes Roy. Bot. Gard. Edinburgh, 43(3): 366 (1986)—Natal.

SCHOEPIA (Olacac.).
clarkii J.A. Steyermark in Ann. Missouri Bot. Gard., 75(3): 1061 (1988)—Venezuela.
paradoxa (Bisse & Berazain) R. Berazain in Phytologia, 67(6): 451 (1989): Schoeberia paradoxa.

ent (Duro Brases to Diamantina)
..... *V. compacta*

***Vellozia auriculata* Fulano & Beltrano**

sp. nov. TYPE: Brazil, Minas Gerais: Mun. Rio Vermelho, Pedra Menina, Morro do Ambrósio, 31 Mar. 1985 (fl, fr), N. L. Menezes, A. M. Giuliatti, M. G. L. Wanderley, M. G. Sajo & M. Meguro in *CFGR 7678* (holotype, SPF; isotypes, BHCB, K, MBM, MO, SP, US). Figures 1A–I, 3C–E.

Ab omnibus speciebus familiae tepalis externis auriculatis optime distincta. Inter affines hypanthio capsulae sphaeroidales vel obliquis diagnosticat.

Solitary, dracenioid plants, 1.5–3.5 m tall. Stems much-branched, to 20 cm diam. at base and 1.5–2.8 cm at apex. Leaves spiroristicous, straight; leaf sheaths brown; leaf lamina plane, 14–33 cm × 8–13 mm, linear-triangular, glabrous, soon deciduous, the margins serrate. Flowers 1 to 3, bisexuate with petaloid perianth; peduncles 5–13 cm long, with glandular emergences toward apex; hypanthium 1.2–1.5 cm long, 1.0–1.3 cm diam., spheroid or obloid, trigonous, glabrous except for few small glandular emergences at base and apex. Tepals ca. 5 × 2.5 cm, elliptic-lanceolate, violet, glabrous, the outer ones auriculate, the auricles 1.0–1.8 × 0.7–1.5 cm, obscuring the hypanthium. Stamens 36, with purple lacerate appendages, filaments 0.7–1.0 cm long, violet, anthers ca. 1.5 cm long, yellow; style 3.5–4.0 cm long, violet, stigma 3–5 mm diam., trilobate, yellow. Capsule 1.8–2.0 cm long, 1.8–2.0 cm diam., dehiscence by apical slits on the locus. *Leaf anatomy* (Fig. 3C–E). Lamina dorsiventral. Trichomes absent but some emergences present (Fig. 3C, arrow). Cuticle thickened on both surfaces. Abaxial furrows about one-half thickness of lamina, papillate. Stomata confined to deep blade furrows, tetracytic. Adaxial epidermis 2–3-seriate, with fiber strands separated by non-thickened cells; abaxial epidermis 1–2-seriate, with fibers. Aquiferous 1-seriate hypodermis present on both surfaces, but less developed abaxially, extending to furrows as a bridge of bulliform cells. Palisade mesophyll 3–4 cell layers thick, abaxially merging with spongy parenchyma. Fibro-vascular bundle surrounded by endodermis as leaf-bundle sheaths. Three passage cells of endodermis flanking the xylem with thickened walls facing the transfusion tracheids (Fig. 3E). Endodermis extending adaxially and abaxially to hypodermis and involving pericycle fibers on both sides of bundles. Phloem strands 2, protophloem separated by parenchymatous cells (Fig. 3E, arrow). Metaxylem with two lateral extensions, the transfusion tracheids.

Vellozia auriculata is found in the Ambrósio and Bocaina Ranges, dividing the Rio Joazeiroinha and Rio Doce basins, within the municipalities of Rio Vermelho and Itamarandiba, Minas Gerais. The new species is locally abundant, and in the Ambrósio Range is a significant floristic feature (Meguro et al., 1994; Pirani et al., 1994). It appears to be endemic to that region. Its vegetative reproduction is an obvious feature in this Minas Gerais landscape. Very tall plants (to 2 m) eventually spread their branches on the ground; these branch apices then become erect with adventitious roots developing. These self-sufficient branches eventually detach from the mother plant, and it is common to find young individuals, generated by this process, surrounding an old or already dead plant (Fig. 1A). This same phenomenon was also observed by Honczewitz (1983) for *Vellozia cf. glabridens* Pohl (probably *V. dasyneis* Seubert) in the Itapoi restinga, Bahia, and by Mello-Silva (1991) for *V. adiantum* Martins, *V. mastularioides* L. B. Smith, *V. minima* Pohl, and *V. scoparia* Goehart & Henzeard, in Minas Gerais, and in a much more specialized way in *V. proflera* Mello-Silva, from Gêto-Mogil, Minas Gerais. *Vellozia auriculata* differs from all similar species by its auriculate tepals and by the spheroid to obloid hypanthium and fruit. These auricles of the outer tepals occur nowhere else among the Velloziaceae. However, their adaptive significance, if one exists, is obscure.

Paratypes. BRAZIL, Minas Gerais: Mun. Itamarandiba, Pedra de França, elev. 1040 m, 11 Mar. 1995 (st), S. Splet 865 (SPF, UB not seen); Mun. Rio Vermelho, Pedra Menina, Serra do Ambrósio, Fazenda Várzea do Anjo, Morro do Ambrósio, 15 July 1984 (fl), M. G. L. Wanderley, E. Vazenda, A. Furlan, A. M. Giuliatti & R. W. Harley in *CFGR 4507* (K not seen, SPF, U); Espigão do Meio, 13 Oct. 1984 (fl), R. Mello-Silva, J. R. Pirani, E. M. Inojima & M. Meguro in *CFGR 5484* (f, SPF, UB); 820 m alt., 11 Sep. 1986 (fl), N. L. Menezes, R. Mello-Silva, T. B. Cavalcanti, J. Cordeiro & J. C. C. Gonçalves in *CFGR 10227* (CTES, G, SP, NFF), 10 June 1991 (fl), R. Mello-Silva, M. L. F. Salatino, A. Salatino & P. Affonso 413 (SPF); Morro da Várzea do Mato Velho, 31 July 1985 (fl), R. Mello-Silva, J. R. Pirani & M. Meguro in *CFGR 7837* (NY, SPF, UFG).

***Vellozia gigantea* N. L. Menezes & Mello-Silva**, sp. nov. TYPE: Brazil, Minas Gerais: Santana do Riacho, Parque Nacional da Serra do Cipó, próximo à sede do IBAMA do Alto do Palácio, 24 Mar. 1989 (fl, fr), R. Mello-Silva, J. R. Pirani & M. Meguro in *CFSC 11319* (holotype, SPF; isotypes, K, MBM, MO). Figures 2A–E, 3A, B.

Ab omnibus speciebus familiae habitus gigantes optime distincta. Affinis est *V. glabra* a qua foliis suberectioribus

***Vellozia auriculata* Fulano & Beltrano**

sp. nov. TYPE: Brazil, Minas Gerais: Mun. Rio Vermelho, Pedra Menina, Morro do Ambrósio, 31 Mar. 1985 (fl, fr), N. L. Menezes, A. M. Giuliatti, M. G. L. Wanderley, M. G. Sajo & M. Meguro in *CFGR 7678* (holotype, SPF; isotypes, BHCB, K, MBM, MO, SP, US). Figures 1A–I, 3C–E.





Herbario de São Paulo
Floreário, Av. Nogueira, 1200, São Paulo, SP, 05508-900

Aral.

Cerro de In Nhúlia, Camp XI, 8.3 h. 1000 m of
Fico Felipe (=Nhúlia). alt. 1300 m.
80°32'W, 45°38'30"S
Cloud forest on ridges and slopes 1 km. S of
the camp.

Tree 8 m. tall, 20 cm. in diameter; leaves
golden-brown beneath. Inflorescence yellow-
green.

Coll.: K. Sata 21186 28 Feb. 1985

For full details of the Project of Digitization of the Herbario de São Paulo, visit the
Project's Web Site: <http://www.projetosdoinstituto.usp.br/Herbario>



Type collection

REVISO SCHEFFLERARUM

det. *Diels & Fiedl.*

Det. David G. Froese

Nov. 1990/01

NEW YORK
BOTANICAL
GARDEN



UNITED STATES

3232472

NATIONAL HERBARIUM



REV. 08/11 09.6.1993

(507745

MUSEO DE CIÊNCIAS REUNIDAS DE SÃO PAULO

Miconia cordata Schlecht
det. J. B. S. P. 20. 1993

Munic. São José do Rio Preto, Pico São Elias, Verticilo
Sul, Cangaço sul do Quilombo, 15° 32' S, 47° 17' W,
Elev. 200 m. Solo afloramento calcário no campo.

S.A. Siqueira 2002 28 novembro 1985
Det. K. de N. S. S. P., L. S. S. P. & L. S. S. P.

Colab.: 2002, Sata, de São Paulo (SP), CPDAC (CPD)
Sata & S.A.S.P. Her. Bot. Universidade de São Paulo, São Paulo, SP.

2002
Planta ericoides, hemicriptita até 1 m de comprimento
na base prostrada. Flores brancas. Inflorescência
racemosa com longas pedicelas. Ovario
superior. Fruto verde. Semente 10.
Planta a ser cultivada. Semente a ser cultivada
em casa de vegetação. Ovario verde em época
de frutificação.



Brasil. Nova Teutonia
27°s. Br. 52-53°w. L.
20.11.35. Plaumann S.

Typus

*Homalocerus
plaumanni* m.

plaumanni
Vog



SCHIEFLERA :-
 reiniana D.G. Frodin in Proc. Acad. Nat. Sci. Philadelphia, 140(2): 337 (1988), nom. nov.: S. aromatica f. scandens Hochreutiner.
 revolutissima M.G. Baumann-Bodenheim, Syst. Fl. Neu-Caledonien, 5: 77, 67 (1989), without latin descr. or type—New Caledonia.
 rodrigueziana Frodin ex M.J. & J.F.M. Cannon in Bull. Brit. Mus. (Nat. Hist.), Bot., 19: 61 (1989), nom. nov. D. ramosa (Maxon) Hieron.
 rodrigueziana Frodin in Proc. Acad. Nat. Sci. Philadelphia, 141: 317 (1989), nom. nov.: D. didymopanax (L.) Pittier.
 sapoensis M.J. & J.F.M. Cannon in Bull. Brit. Mus. (Nat. Hist.), Bot., 19: 38 (1989)—Panama.
 simplex J.A. Steyermark & Holst in Ann. Missouri Bot. Gard., 75(3): 1082 (1988)—Venezuela.
 urbaniana (Marchal) D.G. Frodin in Proc. Acad. Nat. Sci. Philadelphia, 141: 318 (1989): Didymopanax urbanianus.
 vanuatu P.P. Lowry in Bull. Mus. Nation. Hist. Nat., B. Adansonia, Ser. 4, 11(2): 129 (1989)—Vanuatu.
 veitchii (Carnière) D.G. Frodin & P.P. Lowry in Baileya, 23(1): 11 (1989): Aralia veitchii.
 whitefoordiae M.J. & J.F.M. Cannon in Bull. Brit. Mus. (Nat. Hist.), Bot., 19: 47 (1989)—Panama.
 yutajensis J.A. Steyermark & Holst in Ann. Missouri Bot. Gard., 75(3): 1082 (1988)—Venezuela.

SCHIZACHYRIUM (Gramin.)
 beckii T.J. Killeen in Ann. Missouri Bot. Gard., 77(1): 184 (1990)—Bolivia.
 hirtivaginum (L.) C.F. Reed in Phytologia, 67(6): 451 (1989): Andropogon praematurus f. hirtivaginum.
 hirtivaginum (L.) C.F. Reed in Phytologia, 67(6): 451 (1989): Andropogon praematurus f. hirtivaginum.
 scoparium
 f. calvescens (Fern.) C.F. Reed in Phytologia, 67(6): 451 (1989): Andropogon scoparius f. calvescens.
 var. polycladum (Scribn. & Ball) C.F. Reed in Phytologia, 67(5): 410 (1987): Andropogon scoparius polycladus.
 f. villosissimum (Kearney) C.F. Reed in Phytologia, 67(6): 451 (1989): Andropogon scoparius f. villosissimus.
 villosum (Poir.) J.F. Veldkamp in Blumea, 31(2): 306 (1986): Rottboellia villosa.

SCHIZOCALON :-
 lauricola McVaugh ex D. Frame in R. Novogaliciana, 15: 267 (1989)—Mexico.
 pellucidum D. Frame in R. Novogaliciana, 15: 272 (1989)—Mexico.
 tigrisense D. Frame in R. Novogaliciana, 15: 274 (1989)—Mexico.

SCHOENOCEPHALUM (Rapateaceae)
 sipi (L.) M. G. Baumann-Bodenheim in Acta Bot. Neerlandica, 1988—Venezuela.

SCHOENOCLEIS (Cyperac.)
 oligocephalus (W.M. Curtis) O. Seber in Willdenowia, 16(1): 182 (1986): Oreobolus oligocephalus.

SCHOENOPLECTUS (Cyperac.)
 xkueckenthalianus (Junge) D.H. Keiser in Occas. Pap., 29: 128 (1989): Scirpus xkueckenthalianus.

SCHOENORCHIS (Orchidac.)
 eberhardtii (Finet) L.V. Averyanov in Lindleyana, 5(2): 101 (1990): Robertia eberhardtii.

SCHOENOXIPHIMUM (Cyperac.)
 altum I. Kukkonen in Notes from Edinburgh, 43(3): 365 (1986)—Seychelles Province.

bracteosum I. Kukkonen in Notes from Edinburgh, 43(3): 365 (1986)—Seychelles Province, Natal, Lesotho.
 burttii I. Kukkonen in Notes from Edinburgh, 43(3): 365 (1986)—Natal.

molle I. Kukkonen in Notes from Edinburgh, 43(3): 366 (1986)—Natal.
 strictum I. Kukkonen in Notes from Edinburgh, 43(3): 366 (1986)—Natal.

SCHOEPIA (Olacac.)
 clarkii J.A. Steyermark in Ann. Missouri Bot. Gard., 75(3): 1061 (1988)—Venezuela.
 paradoxa (Bisse & Berzain) R. Berzain

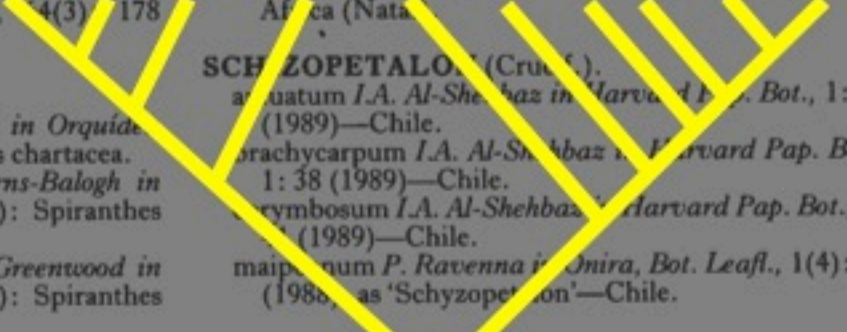
SCHIZOLOBIUM (Asclepiadac.)
 amatolense (L.M. Hilliard) in Notes Roy. Bot. Gard. Edinburgh, 45(2): 81 (1989)—South Africa (Cape Province).
 rupestris (L.M. Hilliard) in Notes Roy. Bot. Gard. Edinburgh, 45(2): 82 (1989)—South Africa (Natal).

SCHIZOPETALON (Cruceac.)
 angustatum I.A. Al-Shehbaz in Harvard Pap. Bot., 1: 34 (1989)—Chile.
 brachycarpum I.A. Al-Shehbaz in Harvard Pap. Bot., 1: 38 (1989)—Chile.
 cymbosum I.A. Al-Shehbaz in Harvard Pap. Bot., 1: 34 (1989)—Chile.
 maiponum P. Ravenna in Onira, Bot. Leaflet, 1(4): 32 (1988), as 'Schyzopetalon'—Chile.

SCHIZOPHYLLUM (Hydrangeac.)
 hydrangeoides
 f. mollis (H. Hara) Hara ex H. Ohba in J. Jap. Bot., 64(11): 325 (1989): S. hydrangeoides var. mollis.

Nomenclatura

cladística



SCHIEDEA (Caryophyllac.)
 kauaiensis H. St. John in Phytologia, 64(3): 178 (1988)—Hawaiian Is.
 obatae H. St. John in Phytologia, 64(3): 178 (1988)—Hawaiian Is.
 wichmanii H. St. John in Phytologia, 64(3): 178 (1988)—Hawaiian Is.

SCHIEDEELLA (Orchidac.)
 chartacea (L.O. Wms.) P. Burns-Balogh in Orquidea (México), 10(1): 92 (1986): Spiranthes chartacea.
 dendroneura (Sheviak & Bye) P. Burns-Balogh in Orquidea (México), 10(1): 92 (1986): Spiranthes dendroneura.
 diaphana (Lindl.) P. Burns-Balogh & Greenwood in Orquidea (México), 10(1): 93 (1986): Spiranthes diaphana.
 dodii P. Burns-Balogh in Orchidee, 40(5): 169 (1989)—Hispaniola (Dominican Republic).
 durangensis (A. & S.) P. Burns-Balogh in Orquidea (México), 10(1): 93 (1986): Spiranthes durangensis.
 fauci-sanguinea (Dod) P. Burns-Balogh in Orchidee,

Cornetum longum

Cornetum rubrum

Trombeta alba

Trombeta torta



UNIVERSIDADE DE SÃO PAULO



Cornetum longum

Cornetum rubrum

Trombeta alba

Trombeta torta



UNIVERSIDADE DE SÃO PAULO



```
graph LR; Root --- Node1; Node1 --- CL[Cornetum longum]; Node1 --- Node2; Node2 --- TR[Trombeta rubra]; Node2 --- Node3; Node3 --- TA[Trombeta alba]; Node3 --- TT[Trombeta torta];
```

Cornetum longum

Trombeta rubra

Trombeta alba

Trombeta torta



UNIVERSIDADE DE SÃO PAULO





Cornetum longum

A phylogenetic tree diagram showing the relationships between four species of the genus *Cornetum*. The tree is rooted on the left and branches out to the right. The species names are listed to the right of the branches, ordered from top to bottom: *Cornetum longum*, *Cornetum rubrum*, *Cornetum album*, and *Cornetum tortum*. The branches are represented by thick grey lines.

Cornetum rubrum

Cornetum album

Cornetum tortum



UNIVERSIDADE DE SÃO PAULO



Cornetum longum

Tuba rubra

Trombeta alba

Trombeta torta



UNIVERSIDADE DE SÃO PAULO





Cornetum longum

A phylogenetic tree with a root on the left. The root splits into two main branches. The upper branch splits into two sub-branches, leading to the top two labels. The lower branch leads to the bottom label.

Trombeta rubra

Trombeta alba

Trombeta torta



Cornetum longum

A phylogenetic tree with a root on the left. The root splits into two main branches. The upper branch splits into two sub-branches, leading to the top two labels. The lower branch leads to the bottom label.

Cornetum rubrum

Cornetum album

Cornetum tortum



Cornetum longum

A phylogenetic tree with a root on the left. The root splits into two main branches. The upper branch splits into two sub-branches, leading to the top two labels. The lower branch leads to the bottom label.

Tuba rubra

Trombeta alba

Trombeta torta



Drago impudicus

Drago drago

Pseudodrago viridis

Pseudodrago belzebu



UNIVERSIDADE DE SÃO PAULO



Drago impudicus

Drago drago

Pseudodrago viridis

Pseudodrago belzebu



UNIVERSIDADE DE SÃO PAULO





A phylogenetic tree with a root on the left. The tree branches into four species. The top branch leads to *Drago impudicus*. The second branch leads to *Drago drago*. The remaining two branches form a clade containing *Drago viridis* and *Drago belzebu*.

Drago impudicus

Drago drago

Drago viridis

Drago belzebu



```
graph LR; Root --- Node1; Node1 --- Metadrago[Metadrago impudicus]; Node1 --- Node2; Node2 --- Drago[Drago drago]; Node2 --- Node3; Node3 --- Pseudodrago1[Pseudodrago viridis]; Node3 --- Pseudodrago2[Pseudodrago belzebu];
```

Metadrago impudicus

Drago drago

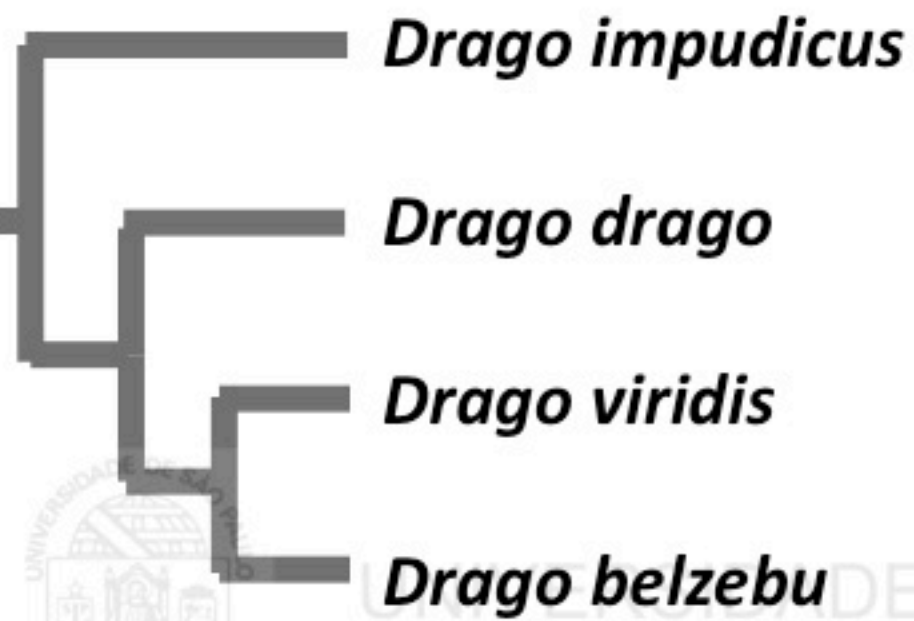
Pseudodrago viridis

Pseudodrago belzebu

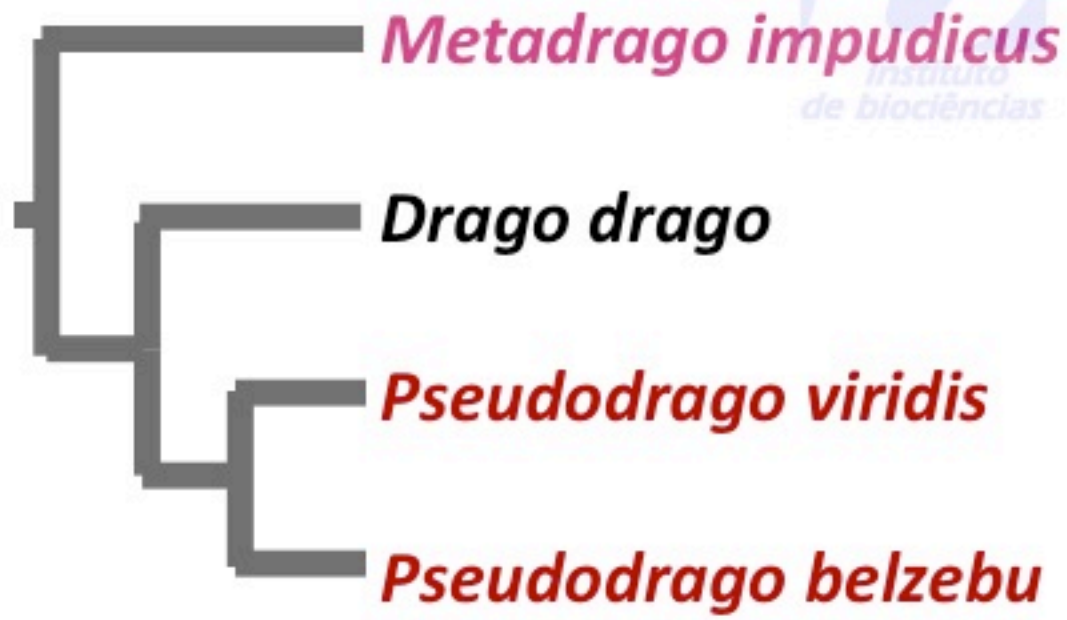


UNIVERSIDADE DE SÃO PAULO





UNIVERSIDADE DE SÃO PAULO



***Trombeta rubra* (Lam.) Ful.**

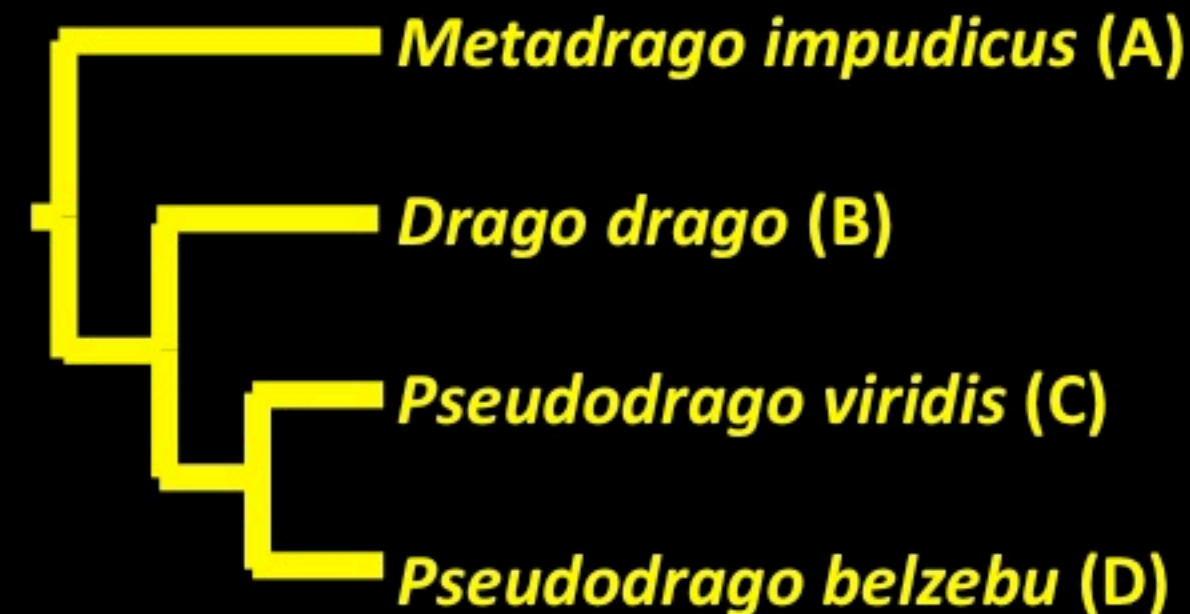
Cornetum rubrum Lam.

***Drago belzebu* (Darwin)**

Pseudodrago belzebu

Nome corretos/válidos
sinônimos





SUBORDINAÇÃO**SEQUENCIAÇÃO*****Drago***Subgen. *Impudicus**Drago impudicus*Subgen. *Drago*Sect. *Drago**Drago drago*Sect. *Viridis**Drago viridis**Drago belzebu****Drago****Drago impudicus**Drago drago**Drago viridis**Drago belzebu****Dragidae***Subfam. *Impudicinae**Metadrago**Metadrago impudicus*Subfam. *Draginae**Drago**Drago drago**Pseudodrago**Pseudodrago viridis**Pseudodrago belzebu****Dragidae****Metadrago**Metadrago impudicus**Drago**Drago drago**Pseudodrago**Pseudodrago viridis**Pseudodrago belzebu*

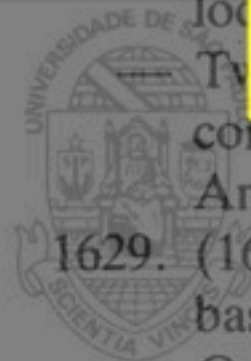
UNIVERSIDADE DE SÃO PAULO



1627. Leaves not translucent-glandular-punctate. Corolla imbricate, rarely valvate, then ovules 3—more per locule. Ovary 1.—Ovules 2—more per locule, rarely only 1, then flowers 4-merous. Endosperm copious. **Ericaceae**

— Leaves translucent-glandular-punctate. Corolla valvate. Ovaries 2—more, free at base, but not at the apex.—Flowers solitary or in fascicles. Ovules 2 per ovary..... **Rutaceae**

1628. Twigs and petioles with a pale, wavy, sclerenchymatous ring around resinous ducts in transverse section. Filaments free. Ovules 2 per locule. **Proteaceae**



Identificação biológica

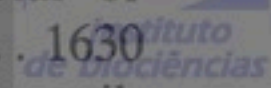
Twigs and petioles without such ring and ducts. Filaments nearly completely connate, rarely free, then ovules many per locule.—Anthers with 2 longitudinal slits..... **Meliaceae**

1629. (1613). Ovary 1-locular. Ovules numerous.—Placenta parietal or basal-parietal..... 1630

— Ovary 1, 2—more-locular. Ovaries 2—5. Ovules 1 or a few or axillary..... 1631

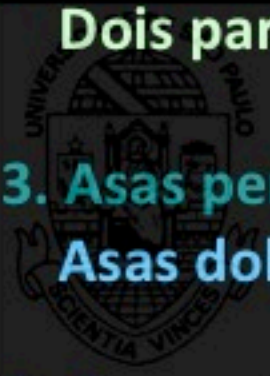
1630. Leaves opposite. Sepals connate, valvate. Stamens 6. Ovules parietal. Endosperm present. **Frankeniaceae**

— Leaves alternate. Sepals free, imbricate. Stamens 8—10. Ovules



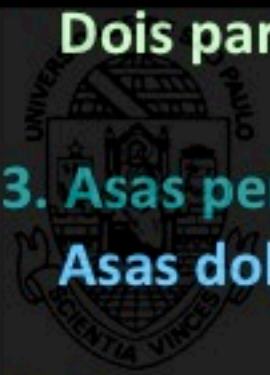
Chave por justaposição

- 1. **Asas presentes** 2
 - Asas ausentes** 5
- 2. **Um par de asas** *Mosca*
 - Dois pares de asas** 3
- 3. **Asas perpendiculares** *Libélula*
 - Asas dobradas** 4
- 4. **Asas membráceas** *Cigarra*
 - Asas endurecidas** *Besouro*
- 5. **Pernas posteriores saltadoras** *Pulga*
 - Pernas posteriores não saltadoras** *Formiga*



Chave por justaposição

- 1. Asas presentes** 2
Asas ausentes 5
- 2. Um par de asas** *Mosca*
Dois pares de asas 3
- 3. Asas perpendiculares** *Libélula*
Asas dobradas 4
- 4. Asas membráceas** *Cigarra*
Asas endurecidas *Besouro*
- 5. Aparelho bucal sugador** *Pulga*
Aparelho bucal mastigador *Formiga*



Chave por justaposição

- 1. **Asas presentes** 2
 - Asas ausentes** 5
- 2. **Um par de asas** *Mosca*
 - Dois pares de asas** 3
- 3. **Asas perpendiculares** *Libélula*
 - Asas dobradas** 4
- 4. **Asas membranáceas** *Cigarra*
 - Asas endurecidas** *Besouro*
- 5. **Pernas posteriores saltadoras, aparelho bucal sugador** *Pulga*
 - Pernas posteriores não saltadoras, aparelho bucal mastigador**
 - *Formiga*

